



Emerson Tsai

Grandma Fan,
ZU-Mei



Intersection rights of way?

How to distinguish between the major and minor roads?

By road **signs, markings, and signals**

By lights

A flashing red light denotes a minor road



Flashing
amber light

Major road → **Slow down** when approaching an intersection



Flashing
red light

Minor road → Stop and check for oncoming traffic

→ before moving off

By signs and markings

Stop, give the right of way signs, and give right of way lines mean minor roads



Give Way



When approaching an **intersection**, give the **right of way** to vehicles on the major road

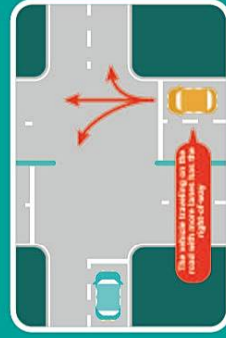


STOP

When approaching an **intersection**, **stop** and check for oncoming traffic before moving off

By the number of lanes

Roads with fewer lanes are minor roads



Fewer lanes give the right of way to more lanes

How to judge

Vehicles traveling on roads with fewer lanes should give way to vehicles traveling on roads with **more lanes**